

Rottnest Island Authority

Longreach Accessible Accommodation (Unit 823)

Summary:

- 'Wheelchair friendly' unit located in Longreach accommodation area.
- Level access from street into unit.
- Two bedroom unit, with two single beds in each room.
- Short threshold ramp access into spacious bathroom with wall mounted, folding, padded shower bench, handheld shower hose and grab rails.

Location: Unit 823 Hydroflyte Loop, Longreach Bay, Rottnest Island

GIS: 50J eastings 360772 / northings 6459728



Telephone: Rottnest Island Authority central reservations phone (08) 9432 9111 or 1800 111 111 – Regional Western Australia only.

Web: www.rotnnestisland.com
[Accommodation Map](#)

Closest public transport:

- Bus Stop 19, Geordie Bay.

External access:

- 137m from Geordie Bay Bus Stop to entrance gate of unit.
- Level access along bituminised roadway.

Front entrance:

Gate:

- Level access through a full height, 800mm wide gate into a concrete courtyard.
- Ring style pull handle.

Courtyard:

- Concrete surface with brick paving to the clothes line, at standing height.
- Sufficient space undercover to store electric mobility scooter. Closest power point is at kitchen bench and extension lead may be required in order to charge scooter.

Front door:

- Front door and flywire door width of 800mm.
- Door has a D style handle at sitting height and is opened with a key. One handed operation.
- Flywire has a lever handle at sitting height.

Balcony door:

- Balcony door 850mm wide with lever handle at sitting height and small internal locking snib.

- Flywire door 820mm wide with lever handle at sitting height.
- Small external step ramp from living area onto balcony.
- Sufficient space on balcony to accommodate wheelchairs of all sizes.

Kitchen:

- 900mm bench height with toe plate access.
- 600mm forward reach to power point, set at 940mm high.
- Gas stove 900mm high with front mounted controls.
- Taps 490mm from front of bench.

Living area:

- Combined sitting and dining with moveable furniture.
- 460mm high couch with armrests.
- Dining table and seats without armrests.
- TV wall mounted and with a \$25 security bond a remote control provided.
- Gas heater at sitting height with controls at sitting height.



Bedrooms: Two bedrooms

Doors: Door widths are 820mm.

Bed:

- Both rooms have two single beds.
- 580mm high and soft.
- 700mm space between beds.
- Light and fan switches at sitting height.
- Light switches located at head of bed.
- Mirrors at standing height.
- Hanging space at standing height.
- Power point at 700mm, between the beds.



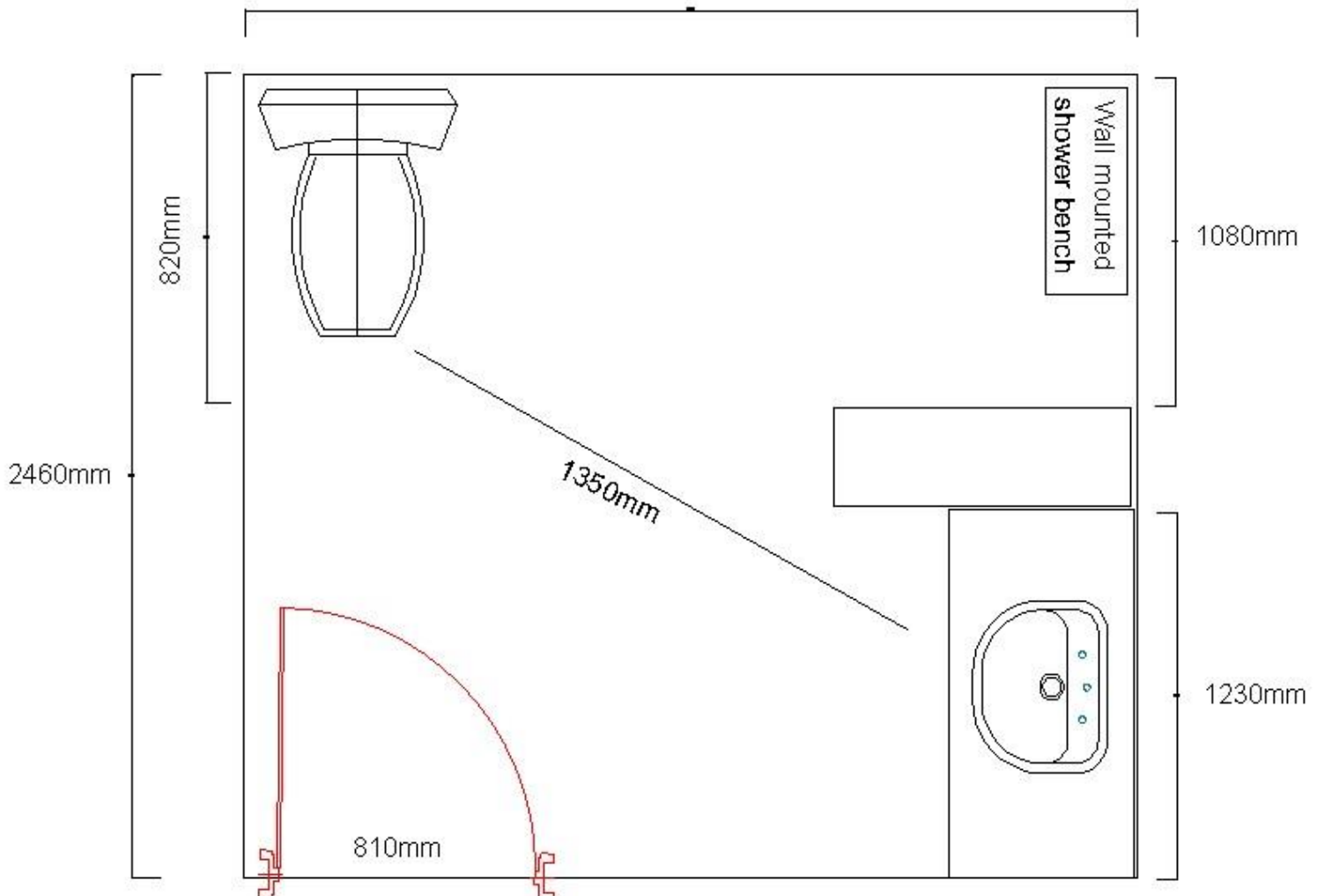
Accessible bathroom:

- External access: Access into the room may be suitable for a medium size wheelchair only due to the narrow entrance corridor.
- Door: 810mm wide swing door.

- Pan height: 470mm.
- Basin height: 820mm.
- Shower: Hand held shower on a sliding rail at standing height.
- Wall mounted fold down seat.
- Coat hook: High standing height.
- Mirror: At sitting height.
- Power point: 1250mm above floor level, near the mirror.



2250mm



Information: 'Welcome to Rottnest Island' file in units with guest information has black lettering on white background in an easy to read 12 point font.

Unit facilities:

- Light switches at sitting height.
- Coat hook at high standing height.

Information collected for Rottnest Island Authority in April 2007.

Care has been taken to ensure the accuracy of this information however no guarantee is given that the facility is fully accessible.

Please advise the Rottnest Island Authority of any access changes since publication.

'You're Welcome WA Access Initiative' © Disability Services Commission 2007

