

# Rottnest Island Authority

## Longreach Accessible Accommodation (Unit 824)

### Summary:

- 'Wheelchair friendly' unit located in Longreach Bay accommodation area.
- Level access from street into unit.
- Three bedroom unit, with two single beds in each room.
- Short threshold ramp access into bathroom with wall mounted, folding, padded shower bench, hand held shower hose and grab rails.

**Location:** Unit 824 Hydroflyte Loop, Longreach Bay, Rottnest Island.

**GIS:** 50J eastings 360779 / northings 6459718

**Telephone:** Rottnest Island Authority Central Reservations Phone (08) 9432 9111 or 1800 111 111.



**Web:** [www.rotnnestisland.com](http://www.rotnnestisland.com)  
[Accommodation Map](#)

### Closest public transport:

- Bus Stop 19, Geordie Bay.

### External access:

- 125m from Geordie Bay Bus Stop to entrance gate of unit.
- Level access along bituminised roadway.

### Front entrance:

#### Gate:

- Level access through a full height, 820mm wide gate into a concrete courtyard.
- Long lever style gate latch.

#### Courtyard:

- Concrete surface with brick paving to the clothes line, at high standing (1700mm) height.
- Sufficient space undercover to store electric mobility scooter ('gopher'). Closest power point is at kitchen bench and extension lead may be required in order to charge scooter.

#### Front door:

- 830mm long step ramp from courtyard to front door, no landing at door.
- Gradient of 7.4 degrees (1:8).
- Front door and flywire door width of 800mm.
- Door has a D style handle at sitting height and is opened with a key. One handed operation.
- Flywire has a lever handle at sitting height.

### **Balcony Door:**

- Balcony door 820mm wide with lever handle at sitting height and small internal locking snib.
- Flywire door has lever handle at sitting height.
- Small external step ramp from living area to balcony.
- Sufficient space on balcony to accommodate wheelchairs of all sizes.

### **Kitchen:**

- 900mm bench height with toe plate access.
- 600mm forward reach to power point, set at 910mm high.
- Gas stove 900mm high with front mounted controls.
- Taps 495mm from front of bench.



### **Living area:**

- Combined sitting and dining with moveable furniture.
- 460mm high couch with armrests.
- Dining table and seats without armrests.
- TV wall mounted and with a \$25 security bond a remote is provided
- Gas heater at sitting height with controls at floor height.

**Bedrooms:** Three bedrooms.

### Doors:

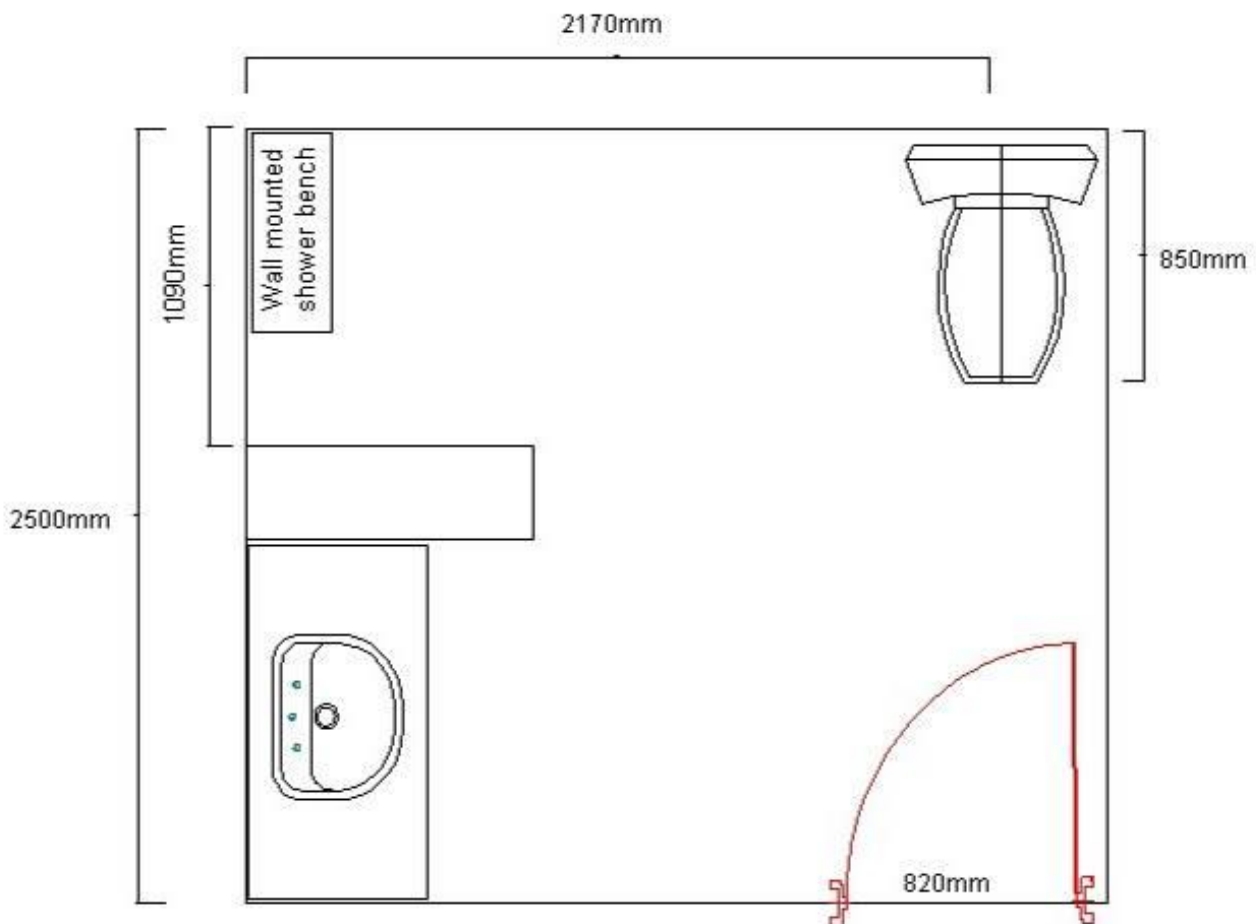
- Door widths are 820mm.

### Bed:

- All rooms have two single beds which can zip together to make a Queen bed. Requested at time of booking.
- 580mm high and soft.
- 600mm - 700mm space between beds.
- Light and fan switches at sitting height.
- Light switches located at head of bed.
- Mirrors at standing height.
- Hanging space at standing height.
- One bedroom has a power point at 1100mm above floor level, between the beds.

### Accessible bathroom:

- External access: Access into the room may be suitable for a medium size wheelchair only due to the narrow external corridor.
- Door: 820mm wide swing door.
- Pan height: 470mm.
- Basin height: 830mm.
- Shower: Hand held shower on a sliding rail at standing height.
- 470mm high wall mounted fold down seat.
- Coat hook: High standing height.
- Mirror: At sitting height.
- Power point: 1200mm above floor level near the mirror.



**Information:** 'Welcome to Rottnest Island' file in units with guest information has black lettering on white background in an easy to read 12 point font.

**Unit facilities:**

- TV with no remote control.
- Light switches at sitting height.
- Coat hook at high standing height.

**Information collected for Rottnest Island Authority in April 2007.**

**Care has been taken to ensure the accuracy of this information however no guarantee is given that the facility is fully accessible.**

**Please advise the Rottnest Island Authority of any access changes since publication.**

'You're Welcome WA Access Initiative' © Disability Services Commission 2007

