

# Rottnest Island Authority

## Thomson Bay Central Accessible Accommodation (Unit 316)

### Summary:

- 'Wheelchair friendly' unit located in Thomson Bay Central accommodation area, level access off street into unit.
- Three bedroom unit with two single beds in each room.
- Level access bathroom with wall mounted folding shower bench, handheld shower hose and grab rails.



**Location:** Unit 316 Vincent Way, Thomson Bay Central, Rottnest Island.

**GIS:** 50J eastings 362125 / northings 6459508

**Telephone:** Rottnest Island Authority central reservations phone (08) 9432 9111 or 1800 111 111 – Regional Western Australia only.

**Web:** [www.rotnnestisland.com](http://www.rotnnestisland.com)  
[Accommodation Map](#)

### Closest public transport:

- Main Bus Stop.

**External access:** Direct access off Vincent Way.

### Front Entrance:

#### Gate:

- Level access through an 880mm wide gate directly off Vincent Way onto a level brick paved and concrete courtyard.
- Half height gate with latch at sitting height.

#### Verandah:

- There is sufficient space on the verandah to store an electric mobility scooter ('gopher'), there is no external electric power point to charge the scooter, however there is an internal power point near the front window through which a power cord can be passed.

#### Front door:

- Level access through 760mm swing door, lever handle at sitting height, key lock at sitting height.
- Internal locking snib at sitting height.
- Access around the door is suitable for wheelchairs of all sizes.

### Rear Entrance:

#### Gate:

- External access to rear gate is across sand.
- 780mm wide half height gate with latch at sitting height.

- Level access from rear gate to rear door.

**Rear courtyard:**

- Clothes line at standing height, accessed over brick paving.

**Rear door:**

- Rear door is 740mm wide with key lock and lever handle at sitting height. Small internal locking snib.
- 10mm lip at rear door.

**Kitchen:** Galley style kitchen off the living area.

- 900mm bench height.
- 1120mm between benches.
- 600mm forward reach across bench to power point.
- 390mm reach to long lever tap.
- Upright gas stove, 900mm high with front mounted controls.



**Living area:** Combined sitting and dining with moveable furniture.

- 450mm high couch with armrests.
- Dining table and seats without armrests.
- There is sufficient space for wheelchairs to move through the living area.
- Free standing gas heater. Controls at sitting height.
- TV wall mounted and with a \$25 security bond a remote control provided.

**Bedrooms:** Three bedrooms accessed directly off the living area.

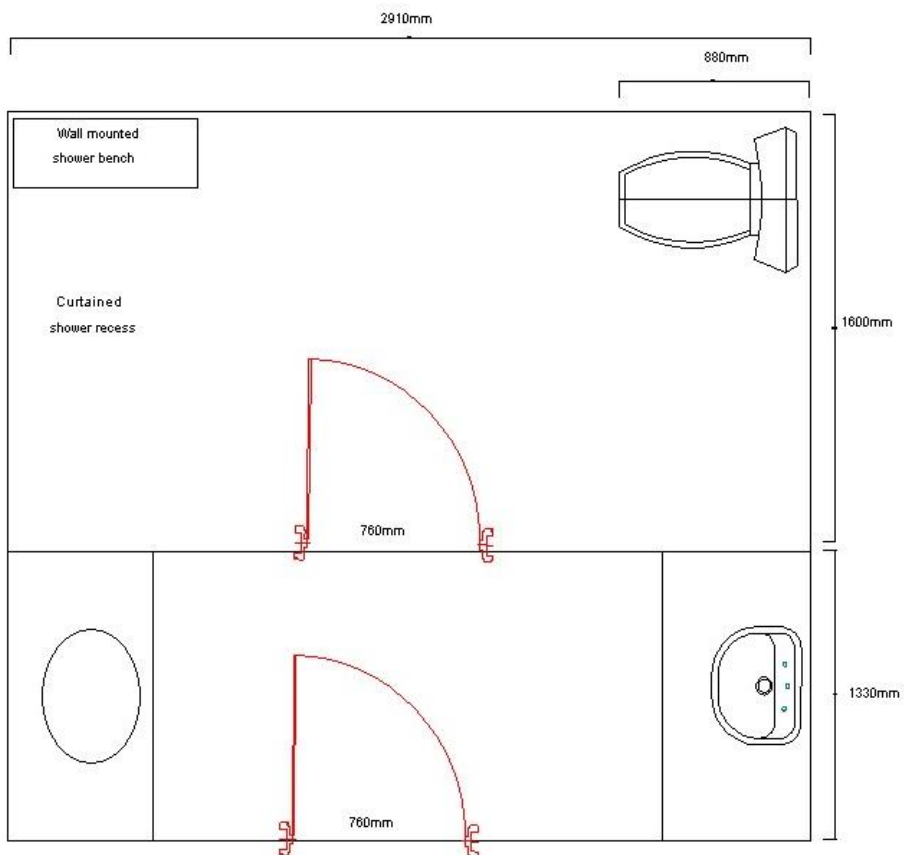
Doors: Door widths are 870mm with lever handles. There is sufficient space for wheelchairs of all sizes to move into the bedrooms.

Bed: All rooms have two single beds. These can zip together to make a Queen size bed. This can be requested at the time of booking.

- 550mm high and soft.
- 1110mm space between beds.
- Light switches at sitting height, located at the head of the beds.
- Hanging space including clothes hooks are at high standing height.
- All bedrooms have mirrors at sitting height.

**Accessible bathroom:** The bathroom has a laundry trough opposite the bathroom basin.

- Door: 870mm wide entrance door with a lever handle. 760mm door into the toilet / shower area.
- Pan height: 410mm.
- Basin height: 800mm.
- Shower: Hand held shower that can be attached into a slot at sitting and standing height. Wall mounted fold up seat, 480mm high.
- Coat hooks: Three standing height coat hooks.
- Mirror at sitting height, base at 1000mm.



**Information:** 'Welcome to Rottnest Island' file in units with guest information has black lettering on white background in an easy to read 12 point font..

**Unit facilities:**

- Light switches at sitting height.

**Information collected for Rottnest Island Authority in June 2007.**

**Care has been taken to ensure the accuracy of this information however no guarantee is given that the facility is fully accessible.**

**Please advise the Rottnest Island Authority of any access changes since publication.**

'You're Welcome WA Access Initiative' © Disability Services Commission 2007

