

Rottnest Island Authority

Thomson Bay Central Accessible Accommodation (Unit 329)

- 'Wheelchair friendly' unit located in Thomson Bay Central accommodation area, level access off street. Step ramp at front door.
- Three bedroom unit, with two single beds in each room.
- Level access bathroom with wall mounted folding shower bench, handheld shower hose and grab rails.



Location: Unit 329 Vincent Way,
Thomson Bay Central, Rottnest Island.

GIS: 50J eastings 362098 / northings 6459322

Telephone: Rottnest Island Authority central reservations phone (08) 9432 9111 or 1800 111 111 – Regional Western Australia only.

Web: www.rotnnestisland.com
[Accommodation Map](#)

Closest public transport:

- Main Bus Stop

External access: Direct access off Vincent Way.

Front Entrance:

Gate:

- Level access through an 880mm wide gate directly off Vincent Way onto a level brick paved and concrete courtyard.
- Half height gate with latch at sitting height.

Verandah:

- There is sufficient space on the verandah to store an electric mobility scooter ('gopher'), there is no external electric power point to charge the scooter, however there is an internal power point near the front window through which a power cord can be passed.

Front door:

- 1100mm long step ramp at front door with a gradient of 4.5° (1:13). No landing at top of ramp.
- 760mm swing door, lever handle at sitting height, key lock at standing height.
- Internal locking snib at sitting height.
- Access around the door is suitable for wheelchairs of all sizes.

Rear Entrance:

Gate:

- External access to the rear gate is across sand.
- The rear gate is 700mm wide, full height, is latched, with pull ring style handle.
- There is a 1.5m long brick paved ramp with a landing at the gate. It has a gradient of 6.5 degrees (1:9).

Rear courtyard:

- Clothes line at standing height, accessed over brick paving.

Rear door:

- Step ramp without a landing with a gradient of 15.5°, steeper than 1:4 is located at the rear door.
- The rear door is 770mm wide, has a lever handle and key lock at sitting height.
- 20mm lip at rear door.

Kitchen: Galley style kitchen off the living area.

- 860mm bench height.
- 1120mm between benches.
- 600mm forward reach across bench to power point.
- 390mm reach to long lever tap.
- Upright gas stove, 900mm high with front mounted controls.



Living area: Combined sitting and dining with moveable furniture.

- 500mm high couch with armrests.
- Dining table and seats without armrests.
- There is sufficient space for wheelchairs to move through the living area.
- Free standing gas heater. Controls at sitting height.
- TV wall mounted and with a \$25 security bond a remote control provided.

Bedrooms: Three bedrooms accessed directly off the living area.

Doors: Door widths are 870mm with lever handles. There is sufficient space for wheelchairs of all sizes to move into the bedrooms.

Bed: All rooms have two single beds. These can be zipped together to make a Queen size bed. This should be requested at time of booking.

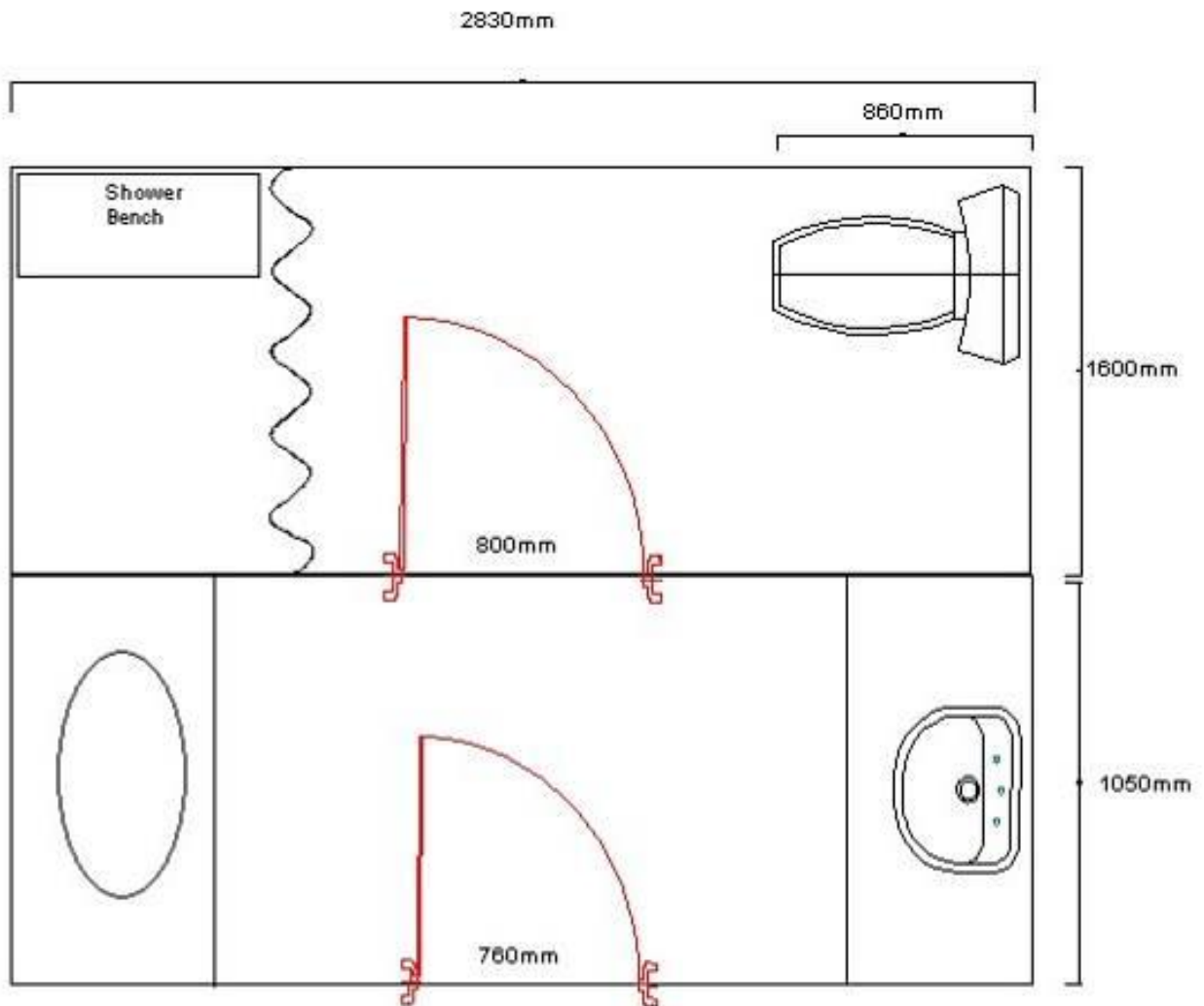
- 550mm high and soft.
- 1150mm space between beds.
- Light switches at sitting height, located at the head of the beds.
- Hanging space including clothes hooks are at high standing height.
- All bedrooms have mirrors at standing height



Accessible bathroom: The bathroom has a laundry trough opposite the bathroom basin.

- Door: 760mm wide entrance door with a lever handle. 870mm door into the toilet / shower area.
- Pan height: 440mm.
- Basin height: 770mm.
- Shower: Hand held shower that can be attached into a slot at standing height only. Wall mounted fold up seat, 480mm high.
- Coat hooks: Three standing height coat hooks.
- Mirror: At sitting height, base at 1000mm.





Information: 'Welcome to Rottnest Island' file in units with guest information has black lettering on white background in an easy to read 12 point font.

Unit facilities:

- Light switches at sitting height.

Information collected for Rottnest Island Authority in April 2007.

Care has been taken to ensure the accuracy of this information however no guarantee is given that the facility is fully accessible.

Please advise the Rottnest Island Authority of any access changes since publication.

'You're Welcome WA Access Initiative' © Disability Services Commission 2007

