

Rottnest Island Authority

Geordie Bay Accessible Accommodation (Unit 948)

Summary:

- 'Wheelchair friendly' unit located within Geordie Bay accommodation area.
- Two bedroom unit, with two single beds in each room.
- Level access into bathroom with wall mounted, folding, padded shower bench, hand held shower hose and grab rails.
- Wide doors both into the bathroom and bedrooms, level access into the bathroom and spacious bathroom may make this unit the most suitable for hoist access.
- Expansive views over Geordie Bay from front balcony.



Location: Unit 948 Katemeraire Road, Geordie Bay, Rottnest Island.

GIS: 50J eastings 360635 / northings 6459591

Telephone: Rottnest Island Authority central reservations phone (08) 9432 9111 or 1800 111 111 – Regional Western Australia only.

Web: www.rotnnestisland.com
[Accommodation Map](#)

Closest public transport:

- Bus Stop 19, Geordie Bay.

External access:

- 150m bituminised roadway from Geordie Bay Bus Stop 18 to entrance gate of unit.
- One 48m section of the bituminised roadway has variable gradients averaging 3 degrees (1:19) and up to 4.5 degrees (1:13).

Front entrance:

Gate:

- There is a ramp leading up to the gate threshold and down into the front courtyard. The external section is 500mm long with a gradient of 10.9 degrees (1:5). The 970mm long landing at the threshold has a gradient of 4 degrees (1:14) and the internal ramp is 120mm long with a gradient of 9 degrees (1:6).
- 860mm wide full height gate with a ring style gate latch.

Courtyard:

- Concrete surface with brick paving to the clothes line, at standing (1500mm) height.

- Sufficient space undercover to store electric mobility scooter ('gopher'). Closest power point is at kitchen bench and extension lead may be required in order to charge scooter.

Front door:

- Small threshold ramp from courtyard to front door.
- Front door and flywire door width of 850mm.
- Door has a D style handle at standing height and is opened with a key. One handed operation.
- Flywire has a lever handle at sitting height.

Balcony Door:

- Balcony door 830mm wide with lever handle at sitting height and small internal sliding bolt.
- Flywire door has lever handle at sitting height.
- Small external step ramp from living area to balcony.
- Sufficient space on balcony to accommodate wheelchairs of all sizes.

Kitchen:

- 900mm bench height with toe plate access.
- 600mm forward reach to power point, set at 1270mm high.
- Gas stove 900mm high with side mounted controls.
- Taps 460mm from front of bench.
- Microwave at standing height.



Living area:

- Combined sitting and dining with moveable furniture.
- 460mm high couch with armrests.
- Dining table and seats without armrests.
- TV wall mounted and with a \$25 security bond a remote control provided.
- Gas heater at sitting height with controls at sitting height.



Bedrooms: Two bedrooms

Doors:

- Door widths are 870mm.

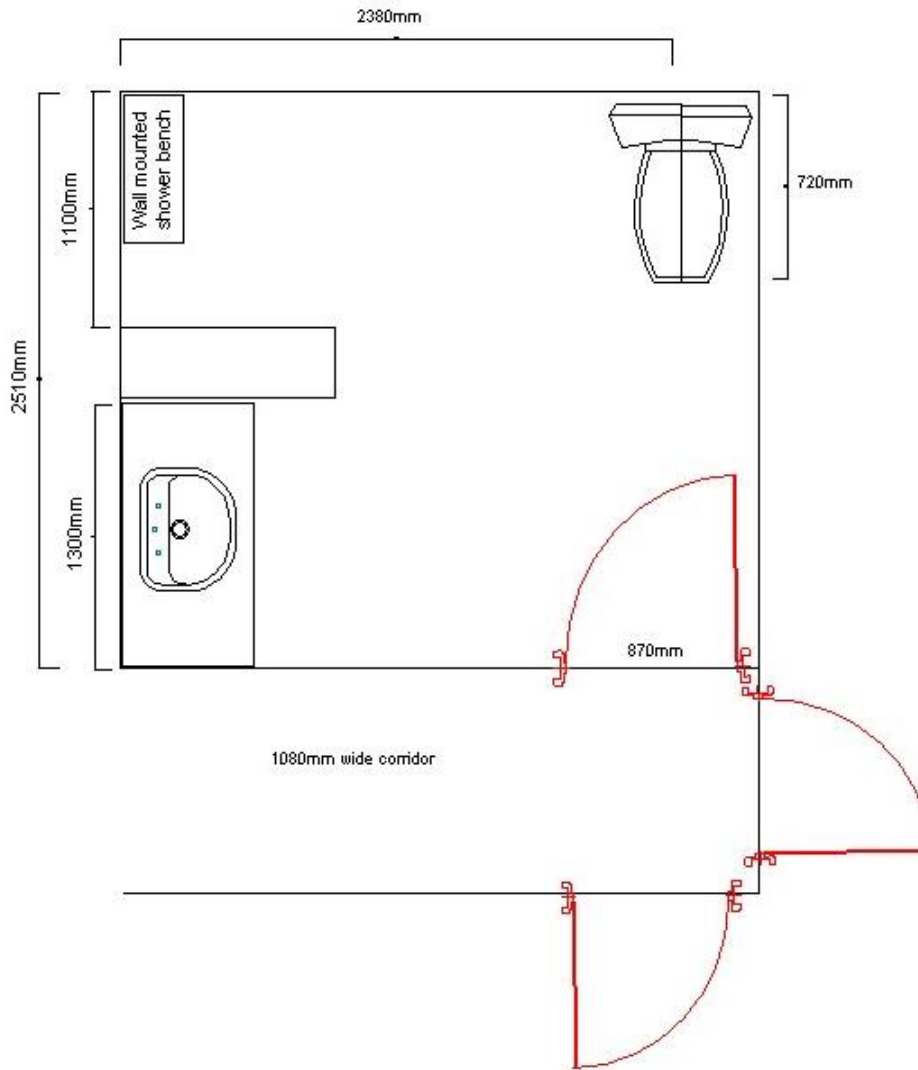
Bed:

- Each room has two single beds that can zip together to make a Queen bed. Requested at time of booking.
- 580mm high and soft.
- 600mm - 700mm space between beds.
- Light and fan switches at sitting height.
- Light switches located at head of bed.
- Mirrors at standing height.
- Hanging space at standing height.
- One bedroom has a power point at 1100mm, between the beds.

Accessible bathroom:

- External access: Access off internal corridor.
- Door: 870mm wide swing door.
- Pan height: 460mm.
- Basin height: 830mm.
- Shower: Hand held shower on a sliding rail at sitting height.
- Seat: Wall mounted fold down seat 500mm.
- Coat hook: High standing height.
- Mirror: At standing height.
- Power point: At standing height near the mirror.





Information: 'Welcome to Rottnest Island' file in units with guest information has black lettering on white background in an easy to read 12 point font.

Unit facilities:

- TV with no remote control.
- Light switches at standing height.
- Coat hooks at high standing height.

Information collected for Rottnest Island Authority in June 2007.
Care has been taken to ensure the accuracy of this information however no guarantee is given that the facility is fully accessible.
Please advise the Rottnest Island Authority of any access changes since publication.

'You're Welcome WA Access Initiative' © Disability Services Commission 2007

